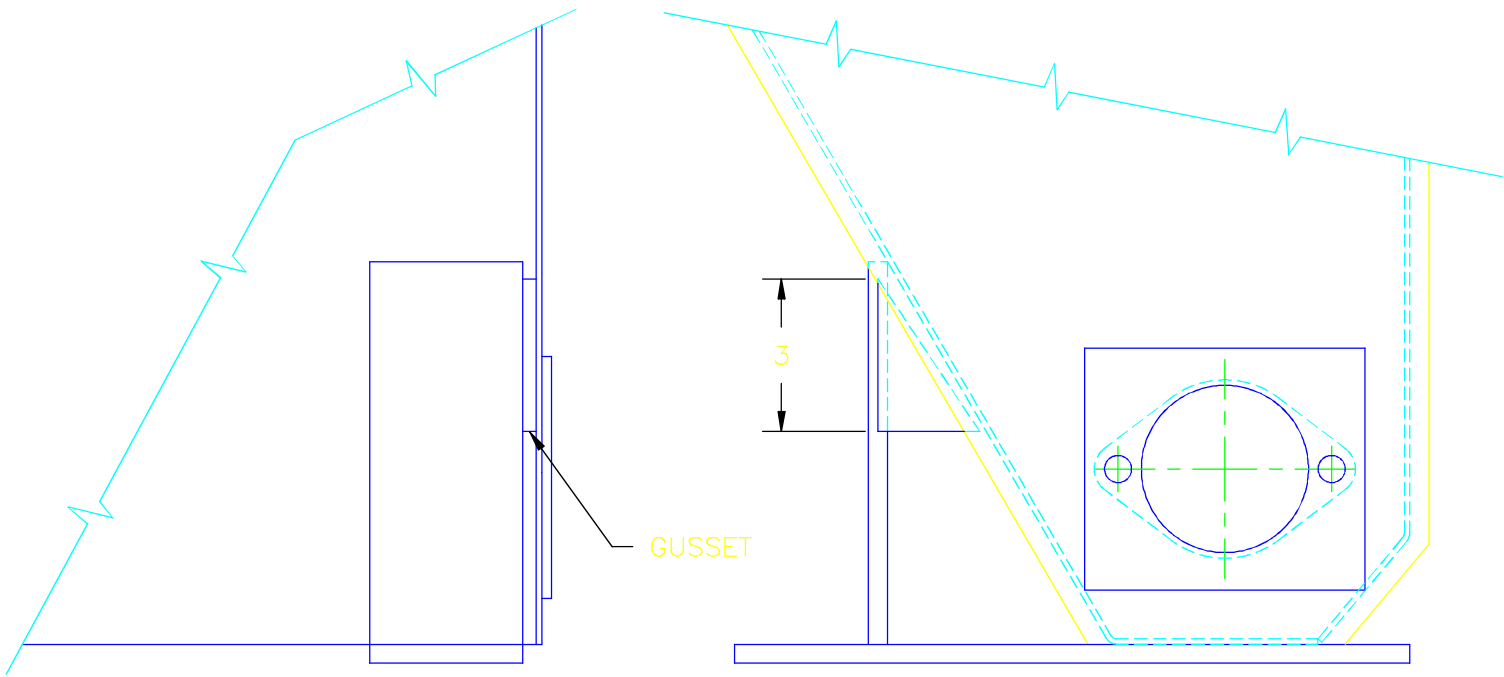
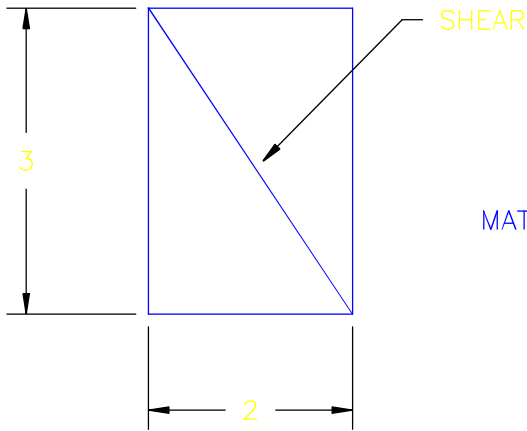


This drawing contains confidential proprietary information of Triple C, Inc. and is subject to return upon request. The furnishing of this drawing is not to be construed as the grant of any license, express or implied, to manufacture, have manufactured, use or sell the structures shown hereon.



INSTALL GUSSET ON BOTH LEGS
BETWEEN END PLATE AND LEG
WELD TO LEG AND END PLATE



GUSSET
MATL: FI 1/4 x 2

TRIPLE C, INC. P.O. BOX 248, SABETHA, KS 66534 (785) 284-3674 FAX (785) 284-3931			
MATERIAL: NOTED			
DWG PATH: \DWG\HF			
DO NOT SCALE DRAWING	SHEET __OF__	SCALE: NTS	DRAWN BY: CEDRIC HEINIGER 02/21/01
TOLERANCES Unless otherwise specified XX .010 XXX .005 XXXX .0005 X/X 1/32 ANGLE 0°30'	TITLE: GUSSET INSTRUCTION		
DRAWING NUMBER: HF12-61			REV A